

ALLDATA[®] REPAIRSM

#1 OEM Repair Information Source

INSTALLATION INSTRUCTIONS

A. ALLDATA[®] RepairSM Installation:

1. Insert the ALLDATA Repair Software **Installation** Disc into your DVD drive to begin setup.

Orange Disc



2. When the install window displays, select "Click Here to Install ALLDATA Repair."

NOTE: You can exit Setup at any time by selecting "Cancel."

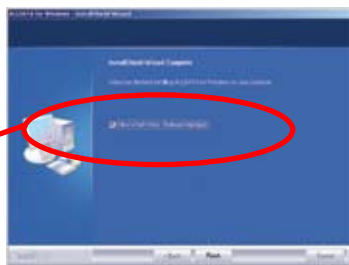


3. Follow the install instructions on the screen.

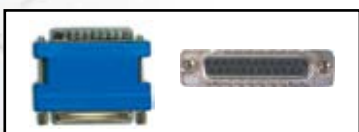
OR

4. If the install window does not automatically display after 10-20 seconds:
 - From the Start menu, select "My Computer" (XP) or "Computer" (Vista).
 - Right-click on the ALLDATA Repair installation DVD icon and left-click on "Open".
 - Right-click on "Setup.exe" and left-click on "Open".
 - Follow the install instructions on the screen.

5. After installation has completed, a dialog box will appear asking if you would like to view the ALLDATA "What's New" presentation.



6. Install your subscription key.
Plug in the supplied ALLDATA Parallel port key or USB port key now. For ALLDATA Parallel port keys, if a printer is plugged into the parallel port, turn off your printer, disconnect the printer cable from your PC, plug in the ALLDATA Parallel key, plug the printer cable into the back of the ALLDATA Parallel port key and turn your printer back on.



Parallel Key/Port Users



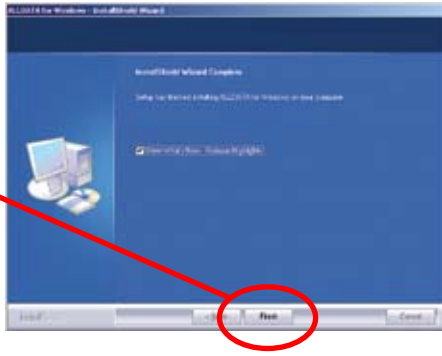
USB Key/Port Users

Continued Inside

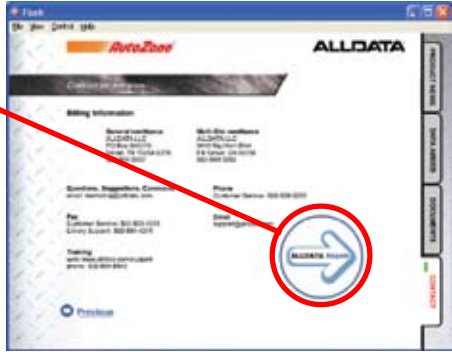


INSTALLATION INSTRUCTIONS

7. Select "Finish" to view the most current information from ALLDATA.



8. The ALLDATA "What's New" presentation will automatically start. After viewing, select the forward arrow to go to ALLDATA Repair.



- OR -

9. Double-click the ALLDATA Repair icon on your PC.



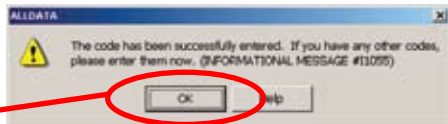
10. Before ALLDATA Repair launches, the following "Subscription and Option" window will appear:



11. Enter the 16-character Subscription Code into the first field and select "Validate Code."

NOTE: This code can be found on the orange sheet entitled "Subscription & Option Codes" included in your package.

12. The following message will confirm that the code has been accepted:



13. Select "OK" to close this window.

14. Repeat Steps #11-13 for any additional Subscription Codes or Options e.g., Online Estimating, AutoZone® Aftermarket Parts Catalog, ALLDATA® ManageSM.

15. Select "OK" to continue.

16. When ALLDATA Repair launches, the Terms and Conditions of Use will display. Please read and accept the terms of the agreement.

17. ALLDATA Repair is now enabled and ready for use.

(NOTE: For additional product installation, see next page)



INSTALLATION INSTRUCTIONS

Proceed with the following sections based on your particular ALLDATA subscription options or other configurations, as needed:

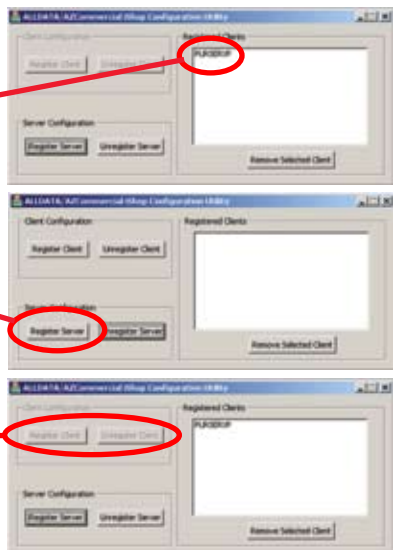
- Configure i•SHOP for integration with a shop management program.
- ALLDATA® ManageSM Installation (including Parts Catalog and Parts Ordering)

B. Configure i•SHOP® for Shop Management System Integration:

When to Perform These Steps:

These steps are performed only if ALLDATA® ManageSM or another i•SHOP-compatible program needs to access data from ALLDATA Repair, AutoZone® Aftermarket Parts Catalog and/or Activant® PartExpert Suite®.

1. From the Start Menu, select Programs, ALLDATA, ALLDATA i•SHOP Configuration.
2. If your computer name is already listed under "Registered Clients," click the X on the upper right-hand corner to close the window and disregard Steps 3-5.
3. If your computer name is not listed under "Registered Clients," select "Register Server."
4. Verify the "Client Configuration" buttons are greyed out (disabled) as shown in the image.
5. Click the X on the upper right-hand corner to close the window.



C1. ALLDATA Manage Installation:

If your subscription includes ALLDATA Manage, install the enclosed version and follow the instructions on your screen. (Full installation instructions are on pages 3 through 10 of the enclosed ALLDATA Manage Getting Started Guide.)



See next page for Parts Catalog and Parts Ordering.



INSTALLATION INSTRUCTIONS

C2. AutoZone® Aftermarket Parts Catalog or Activant® PartExpert Suite® Catalog:

The AutoZone Aftermarket Parts Catalog is included in your ALLDATA® ManageSM subscription. ALLDATA Manage is also compatible with the Activant PartExpert Suite DVD for Activant subscribers. Please perform the following steps to copy either catalog to your hard drive.

1. Insert either the enclosed AutoZone Aftermarket Parts Catalog disc or your existing Activant Part Expert Suite disc into your DVD drive.
2. Launch the Data Update Utility from your desk top shortcut.
3. Select "Start" to begin the copy process.
4. Select "Exit" when the copy process has finished.

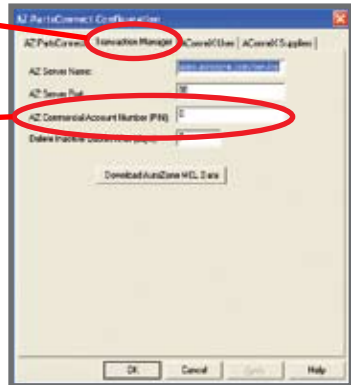


C3. AutoZone Electronic Parts Ordering:

If you have an existing AutoZone commercial account, perform the following steps to enable parts ordering for your account.

If you do not have a commercial account but wish to have one, contact your local AutoZone Commercial Representative or AutoZone store.

1. From the Start Menu, select, Programs, ALLDATA, AZ PartsConnectSM Configuration Utility.
2. Select the "Transaction Manager" tab.
3. Enter your AutoZone commercial account number (PIN#).
4. Select "Apply" then "OK."



For assistance call: **800-859-3282**
or email: **support@alldata.com**

©2009 ALLDATA LLC. All rights reserved. ALLDATA is a registered trademark and ALLDATA Repair, ALLDATA Market and ALLDATA Manage are marks of ALLDATA LLC. AUTOZONE and AutoZone & Design are registered marks and AZ PartsConnect is a mark of AutoZone Parts, Inc. The AutoZone Aftermarket Parts Catalog is used with permission of AutoZone, Inc. The data and software contained therein are licensed, not sold, and are the property of AutoZone, Inc. ©1984-2009 Activant and PartExpert Suite are registered trademarks of Activant Solutions Inc. The Activant data/software contained therein is licensed, not sold and is the property of Activant Solutions, Inc. iSHOP is a registered trademark of the Automotive Aftermarket Industry Association (AAIA). All other marks are the property of their respective holders.

USA Anti-Piracy Warning: The unauthorized reproduction or distribution of this copyrighted work is illegal. Criminal copyright infringement, including infringement without monetary gain, is punishable by up to five years in federal prison and a fine of \$250,000.

New Customer - Install
PN 071-411 r2

RL-09-00065