



Strategic Solutions for Today's Challenges

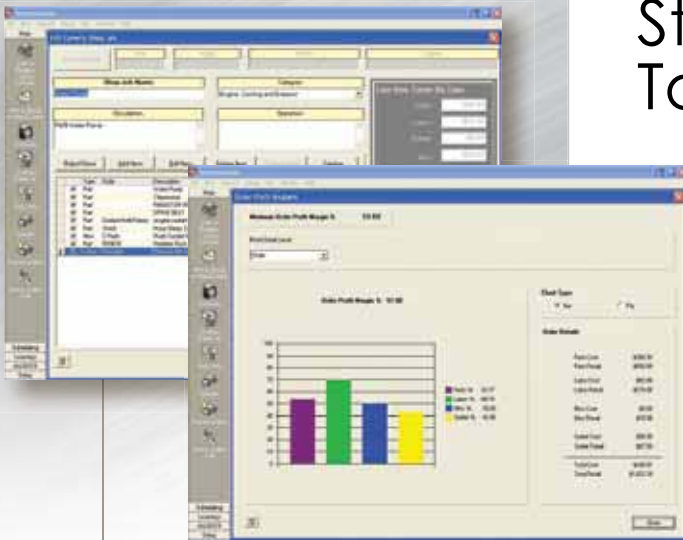
ALLDATA® ManageSM is a strategic shop management system designed to help protect your revenue stream in the face of more reliable vehicles and longer warranties. It is a business solution for the increased challenges of today and tomorrow.

Here's how ALLDATA Manage can benefit you:

- **Fast and accurate write-up process**
Quickly generate professional-looking quotes and repair orders.
- **Look up your customer's contact and vehicle information with the click of a mouse**
Minimize errors and maximize efficiency.
- **Efficient vehicle and technician scheduling**
Time is money. Schedule the correct technician for each job and deliver vehicles on time.
- **Maximize your customer care and profit opportunities**
Incorporate scheduled maintenance services into the job, complete with parts and labor, for each specific vehicle.

Declined maintenance and repair recommendations are automatically saved and retrieved as a job upon your customer's next visit.

Automatically import often overlooked charges, such as shop supplies and hazmat fees.



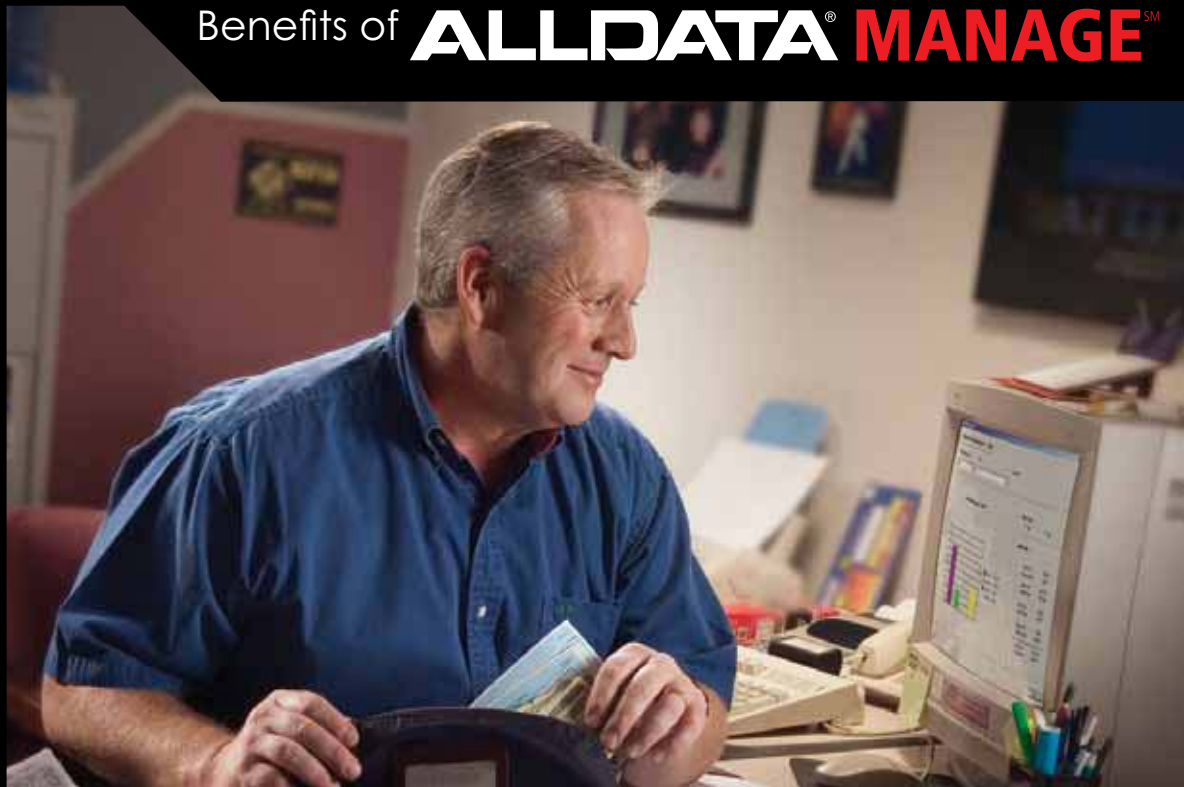
Customize!

ALLDATA Manage allows you to set up "Smart Jobs" and include parts and labor to make write-up even faster.

You set your Profit Margins and ALLDATA Manage will keep you on track on every line item on every invoice.

Protect Your Profits!

ALLDATA Manage Profit Margin Indicators give you an at-a-glance visual before you create the estimate.



Features That Make a Difference

Customer Relationship Management

The data validation feature gives you the option to capture and store vital customer information and protect yourself from invalid warranty claims.

When integrated with ALLDATA[®] MarketSM, your customers can request appointments on-line and you can send them follow-up emails. You also have access to Newsletters, Service Reminders, Recommendations, Thank You and Welcome letters.

Profit Safeguards

The Price Matrix and Profit Margin Monitor automatically protect your profit potential, line-by-line.

Integration with Trusted Accounting Software

Transfer invoices, payments and refunds to QuickBooks[®]**.

Minimize Write-up Errors

Minimize errors that reduce profitability. Automatically import items from the Parts and Labor Catalog.

Online Parts Ordering

Through the Activant[®] Catalog you have the ability to access multiple vendors for parts and estimating. WorldPac[®] SpeedDIAL[™] parts catalog integration allows you to filter and see only the parts that fit your selected vehicle.

OUR CUSTOMERS SAY IT BEST:

"ALLDATA Manage helps every day with our business. Without it, we couldn't operate our shop. It helps with pricing, invoicing and estimating jobs. It is invaluable for us."

Gayla Kulcar

Performance Automotive
Valdese, North Carolina

**ALLDATA Manage is compatible only with QuickBooks[®] 2007 or later (QuickBooks Pro and Premier editions only).

